

P.57 - Female sexual behaviours in a South Italian population of *Xylocopa violacea* (L.) (Hymenoptera: Apidae: Xylocopini).

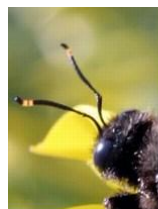
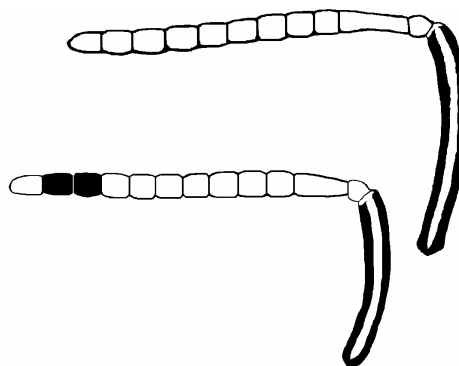
First ISE-ISEB
Congress &
II Meeting
of Italian
Evolutionary
Biologists

Vicidomini Salvatore

C.R.A. Istituto Sperimentale per il Tabacco, via Vitiello 108 - 84018 Scafati (SA: Campania) Italy.

e-mail: xylocopini@gmail.com

The pre-mating *Xylocopa violacea* female sexual ethology was described and discussed based on 659 male female interactions and 453 female refusals. Females showed the following behaviour in order to make a mating choice of male partners (cases numbers and the percentage on total refusal): threatening buzzing on the flower (39; 8.6%); rounds without aerial attacking (78; 17.2%); rounds with aerial attacking (59; 13.0%); rounds with or without aerial attacking with ascending flight (36; 7.9%); female in flight escape (134; 29.6%); catch without copulation and without landing on a perch (33; 7.3%); catch without copulation and with landing (5; 1.1%); consecutive catching and uncatching (2; 0.4%); catching and fall of the couple (21; 4.6%); threatening buzzing and/or attacking from inside cane (41; 9.0%); woodpecker-like behaviour (5; 1.1%). A female refused a male with precatching refusal behaviours in 86.5% of cases of total refusal types, and in 13.5% of cases the refusal happens after male catching. With these behaviours a female refused 69% of male approach, but the traits involved in this choice are unknown.



Female antennae are all black; male antennae have IX and X flagellomeres red-orange (see photo of male head below).